

**Marca: SUNWARD**  
**Modelo: SWE 18UF**

Precio: POA

Ref: SUN5003

**Marca / modelo:** SUNWARD SWE 18UF

**Año:** 2025

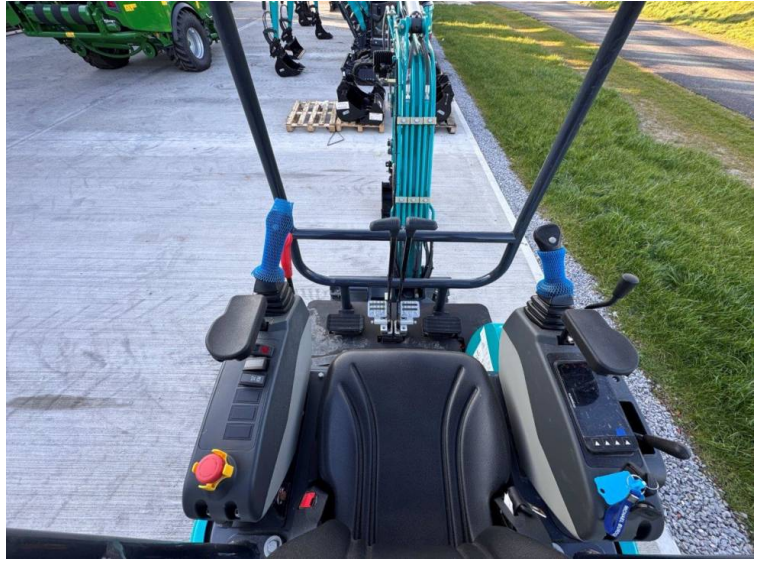
**Condición:** Brand New

**Otras especific.:**

- Machine weight: 1880kg
- 3 year full engine warranty
- Yanmar / Kubota EU stage V engine
- Complete with 3 buckets
- Manual quick hitch
- Zero tail swing
- 2 speed tracking
- Expandable tracks

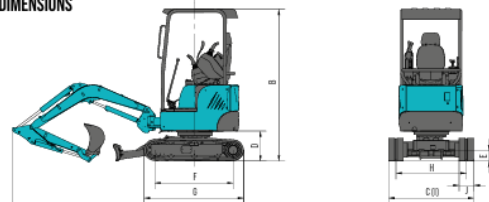






TYPE OF CAB		Canopy
BUCKET CAPACITY		0.64 m <sup>3</sup>
BUCKET WIDTH, STD.		380 mm
MACHINE WEIGHT		1890 kg
	Overall dimension (L x W x H)	3 562 x 990 x 2 250 mm
DIMENSIONS	A Total length	3 562 mm
	B Total height	2 250 mm
	C Total width	990/1 320 mm
	D Ground clearance of counter weight	462 mm
	E Minimum ground clearance	160 mm
	F Track length on the ground	1 210 mm
	G Track length	1 538 mm
	H Track gauge	760/1 080 mm
	I Undercarriage width	990/1 320 mm
	J Track shoe width	230 mm
	Boom length	1 800 mm
	Arm length	1 150 mm
ENGINE	Brand	YANMAR
	Model	3TW80-SSU
	Type	Inline, 3 cylinders, water cooled, mechanical pump
	Emission rating	EU Stage V
TRACK	Type	Rubber track
	Rubber shoe width	230 mm
	Track length	1 538 mm
	Traveling speed (High/Low)	3.5/2.0 km/h
SWING SPEED		30 deg
GROUND PRESSURE		10 kpa
		90.3 kpa
HYDRAULIC PUMPS	Hydraulic pump type	2 variable piston pumps + 1 gear pump
	Max displacement of hydraulic pump	2*21 + 13 L/min
	Hydraulic pressure of hydraulic pump	24.5 Mpa
	Pilot pump	Gear pump
SWING MOTOR	Max displacement of pilot pump	6 L/min
	Hydraulic pressure of pilot pump	3.2 Mpa
TRAVEL MOTOR		Piston motor
FUEL TANK CAPACITY		24.6 L
HYDRAULIC OIL TANK CAPACITY		10.6 L

#### DIMENSIONS

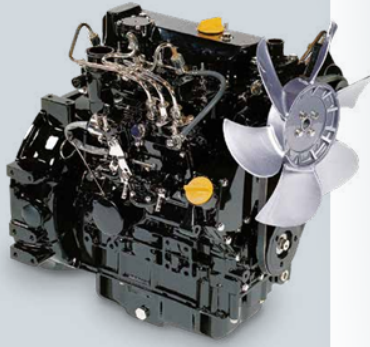


# Reliable, Powerful and Durable

## All key components are carefully selected

The powerful Yanmar 3 TNV 80F engine complies with the European Union's latest Stage V emission requirements and the EPA's Tier 4 final emission requirements. Plus, for reliable and sustainable operations, this engine features low fuel consumption and low noise and vibration levels.

Because the hydraulics are often regarded as the heart of the machine, Sunward sources exclusively from the highest references in the market. For the SWE 18UF, we selected Japanese and Italian premium brands NACHI and Casappa to be our main suppliers for the hydraulic pump and travelling and swing motor. NACHI and Casappa pumps and components for construction machinery are efficient, reliable, and space-saving. So, it's no coincidence that Sunward selected them to contribute to the SWE 18UF's reliability.



## Premium brand critical components

YANMAR	HYDRO-CONTROL	NACHI/CASAPPA		
Stage V engine	Mechanical cartridge valves and joystick	Main pump	Travelling motor	Swing motor
				

Registrada en Inglaterra y Gales Número de empresa: 03184184